

# Industrial Space FOR LEASE

**\$0.80 SF/\$0.95 SF**  
Shell/Office Surcharge

- Many restaurants & services nearby
- Superior access and exposure to Airport Way
- Easy access to PDX and I-205
- NNNs \$0.25-\$0.28/SF
- 5% lease commission to brokers
- NO deferred maintenance
- On site security 365 nights per year
- Monument space available
- Ample parking
- Traffic Count: 40,000 vehicles per day
- High visibility LED lighting in common areas



## Columbia Pacific Airport Way 12801-13151 NE Airport Way, Portland, OR



Address	Bdg	Date Available	Total SF	Office SF	Docks	Grades	Base Rent \$/SF		Comment
							Shell	Office	
13130-13146 NE Airport Way	2	Flexible	89,711	3,639 3,763	20	3	\$0.80	\$0.95	Divisible to 12,184 sf, mezzanine and main floor office
12821 NE Airport Way	7	60 days	15,021	1,800	3	1	\$0.80	\$0.95	
12841 NE Airport Way	9	08/01/23	3,646	1,000	shared	1	\$0.80	\$0.95	
12847 NE Airport Way	9	11/01/23	4,064	708	shared	1	\$0.80	\$0.95	

**Take a virtual tour now: Text "AW" to 805-800-8614**



For more information and tours, contact:  
Quest Property Management  
Office: 503-222-5402

Kevin Johnson 503-816-5402  
Kevin@questpropertymanagement.com

Rachel Phelps 503-349-2799  
Rachel@questpropertymanagement.com

# 13130-13146 NE Airport Way Building 2

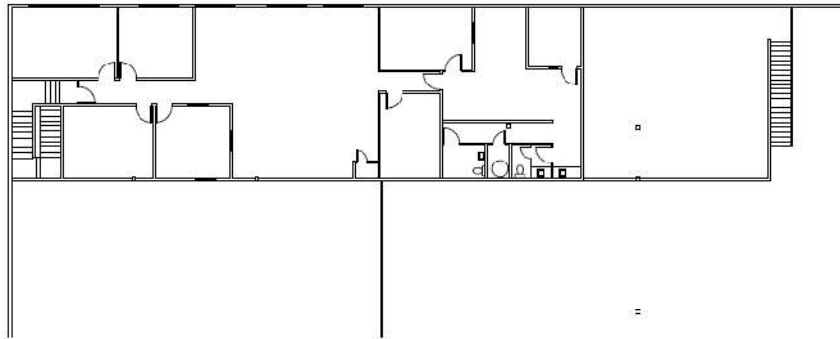
89,711 SF

3,639 SF 1<sup>st</sup>/Main Floor Office - 3,763 Mezzanine Office

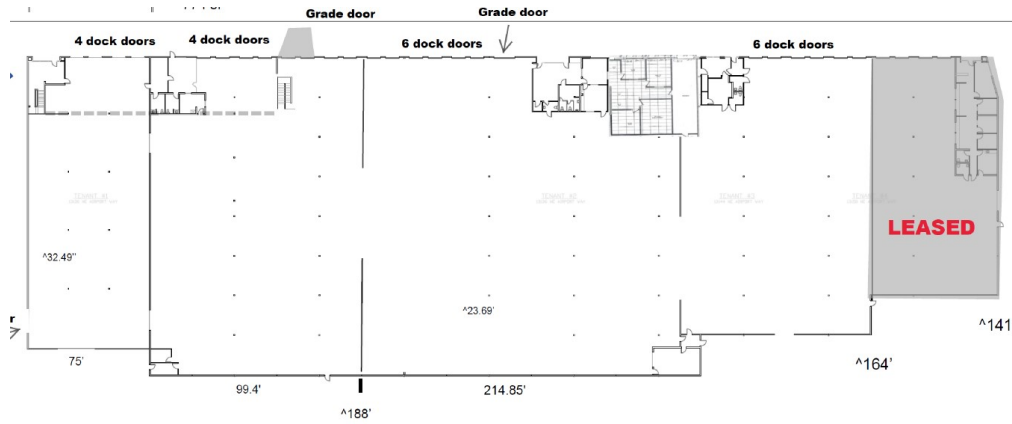
20 Docks 3 Grades

Divisible to 4 spaces: 12,184 SF - 18,686 SF - 40,391 SF - 18,450 SF

## Mezzanine office



## Building 2 – Divided into 4 Spaces



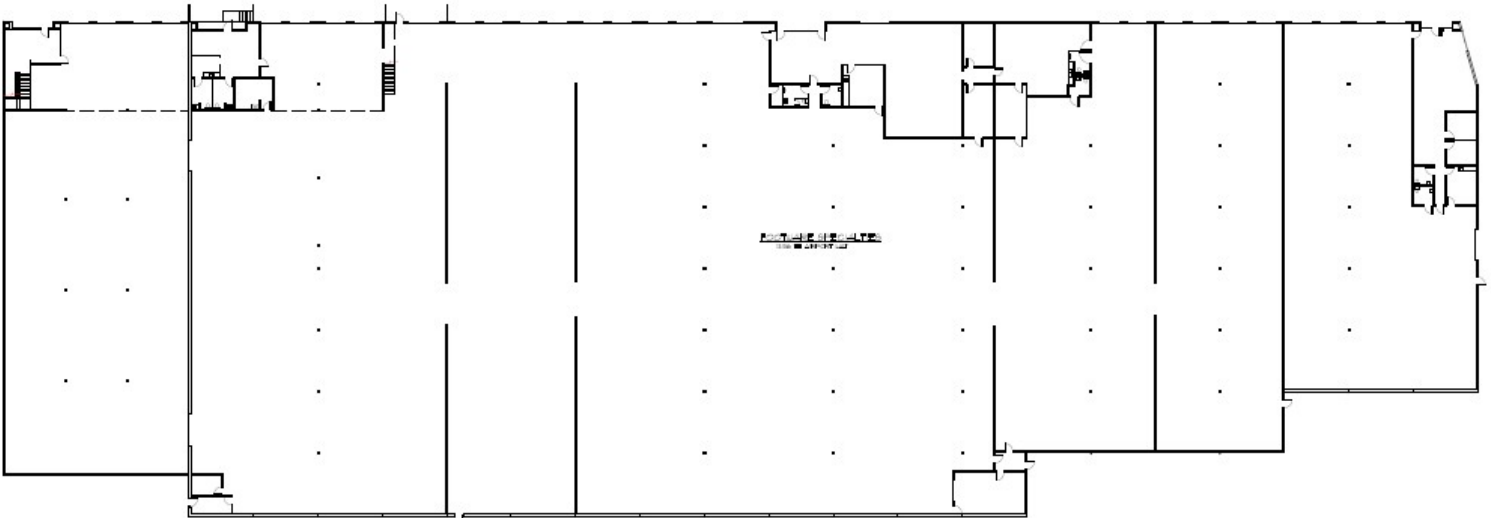
**12,184 sf**

**18,686 sf**

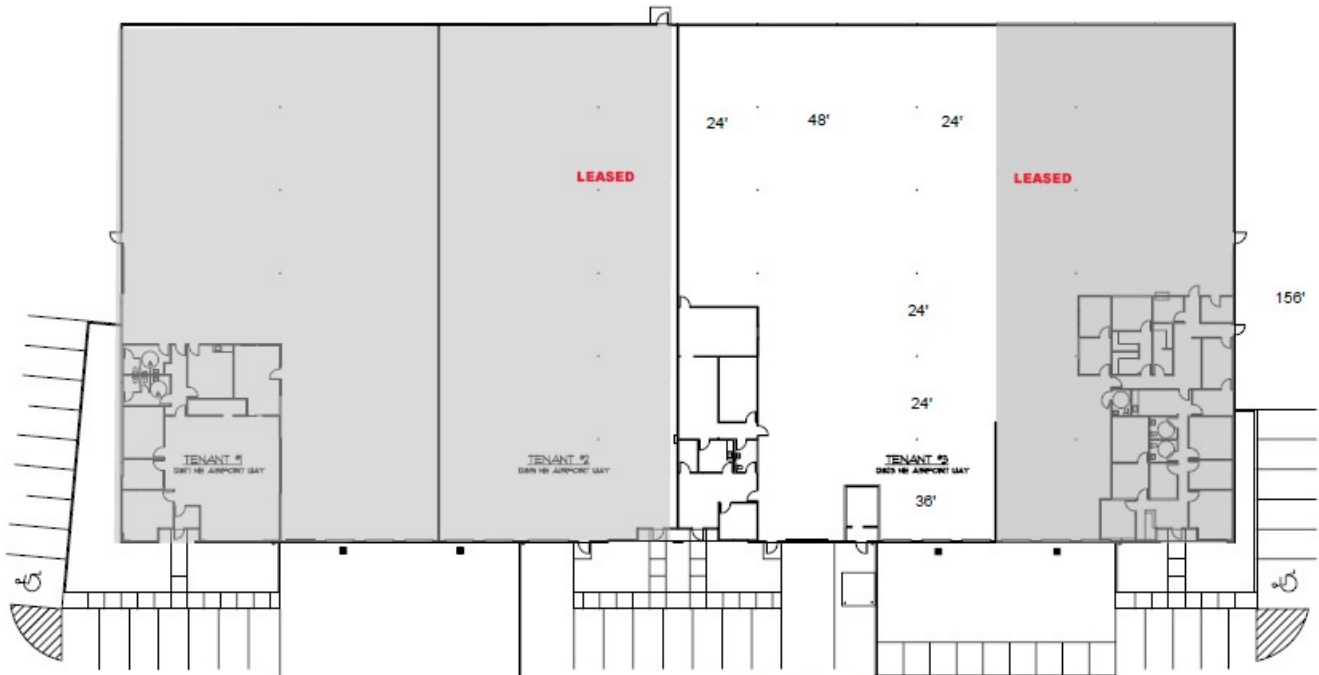
**40,391 sf**

**18,450 sf**

## Building 2 – Full Floorplan

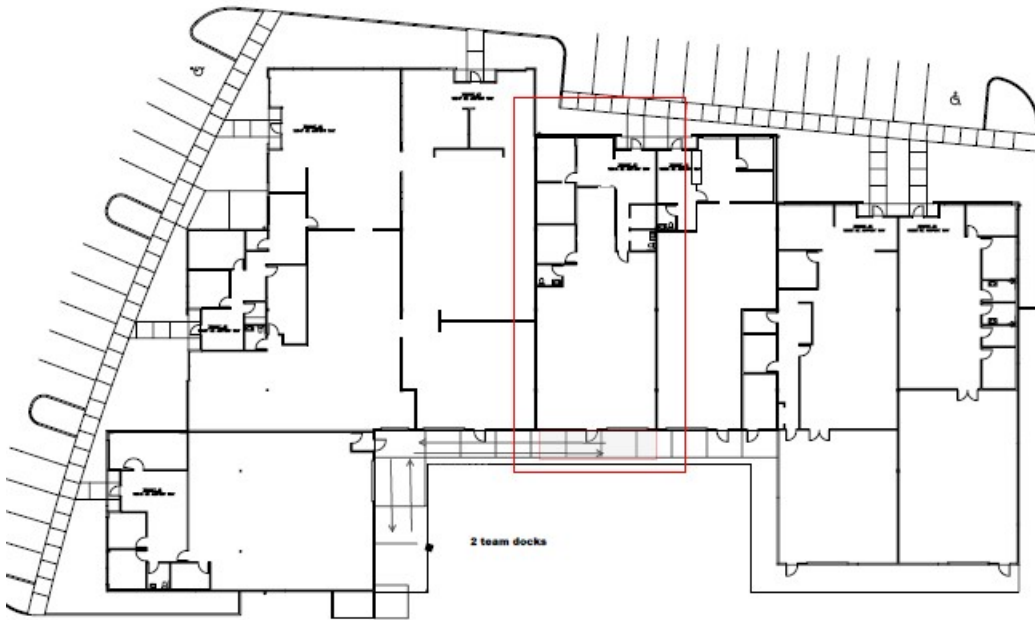


12821 NE Airport Way Building 7  
15,021 SF 2,016 SF Office  
2 Docks 1 Grade



12821 Airport Way: 15,021 SF

**12841 NE Airport Way Building 9**  
**3,646 SF 1,000 SF Office**  
**1 Shared Dock 1 Grade**



**12847 NE Airport Way Building 9**  
**4,064 SF 708 SF Office**  
**1 Shared Dock 1 Grade**

